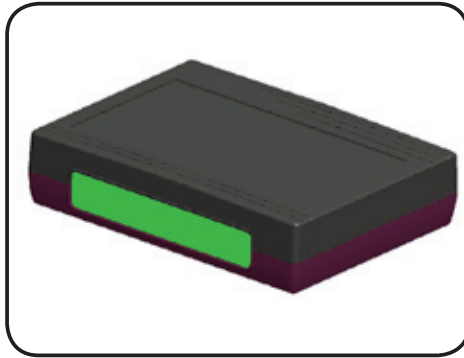


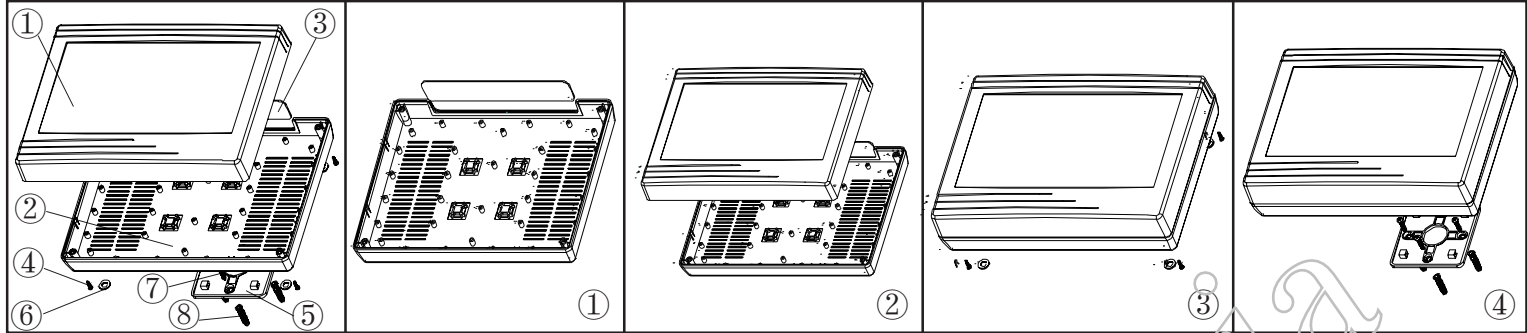
产品型号(MODEL NO.): BMW 50016-A1

产品尺寸 (SIZE): 275×204×64MM

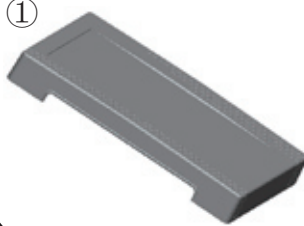
产品重量(WEIGHT):



19221574



①




产品编号(NUMBER): 50016-B1
 产品名称(NAME): 上壳 EPIVALVE
 模具编号 (P/NO): BAH10053-A1
 材料(MATERIAL): ABS(LIGHT GREY:FS20412)
 用量(QUANTITY): 1 PCS
 重量(WEIGHT):

②




产品编号(NUMBER): 50016-C1
 产品名称(NAME): 下壳 HYPOTHECA
 模具编号 (P/NO): BAH10053-A2
 材料(MATERIAL): ABS(LIGHT GREY:FS20412)
 用量(QUANTITY): 1 PCS
 重量(WEIGHT):

③



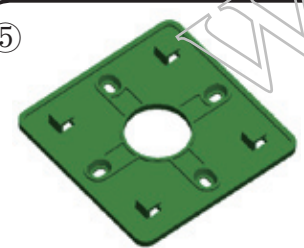
产品编号(NUMBER): 50016-D1
 产品名称(NAME): 挡板 BAFFLE
 模具编号 (P/NO): BAH10053-A3
 材料(MATERIAL): ABS(LIGHT GREY:FS20412)
 用量(QUANTITY): 1 PCS
 重量(WEIGHT):

④



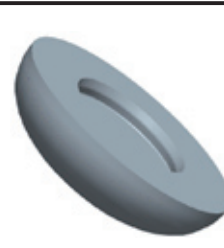
产品编号(NUMBER): PA3×14
 产品名称(NAME): 圆头螺丝 SELF-TAPPING SCREW
 规格(STANDARD): M3×14
 材料(MATERIAL): 铁 IRON
 用量(QUANTITY): 4 PCS

⑤




产品编号(NUMBER): 50002-D1
 产品名称(NAME): 墙挂 WALL TIE ACCESSORIES
 模具编号 (P/NO): BAH10021-A3
 材料(MATERIAL): ABS(LIGHT GREY:FS20412)
 用量 (QUANTITY): 1 PCS
 重量(WEIGHT):

⑥




产品编号(NUMBER): BP-12
 产品名称(NAME): 螺丝盖 SCREVLID
 模具编号 (P/NO): BAH10002-A
 材料(MATERIAL): PVC
 用量(QUANTITY): 4 PCS
 重量(WEIGHT):

⑦



产品编号(NUMBER): PWA3×25
 产品名称(NAME): 自攻螺丝 SELF-TAPPING SCREW
 规格(STANDARD): M3×25
 材料(MATERIAL): 铁 IRON
 用量(QUANTITY): 4 PCS

⑧



产品编号(NUMBER): S-5
 产品名称(NAME): 墙钉 WALL NAIL
 模具编号 (P/NO): BAH10032-A1A2
 规格(STANDARD): S×5 φ3-4
 材料(MATERIAL): PP(GREY:CM906)
 用量(QUANTITY): 4 PCS

名称 NAME	尺寸 SIZE (MM)	CARTON NO.	G. W (KG)	N. W (KG)	每箱数量 QUANTITY	PE袋 POLYBAG
小箱 SAMLL CARTON						
大箱 BIG CARTON						